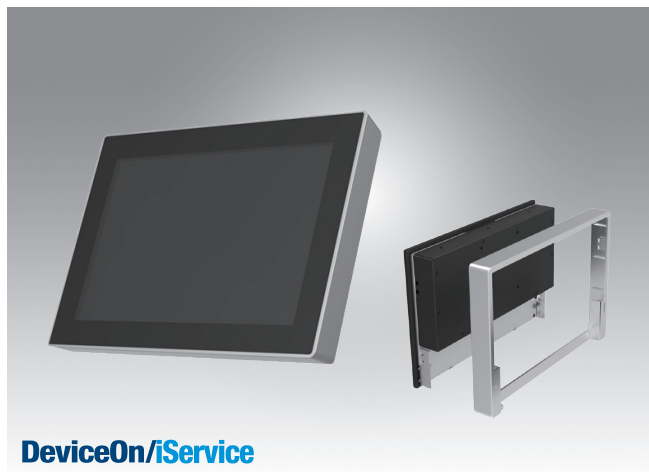


# UTC-510

**10.1" Ubiquitous Touch Computer**  
**UTC-510D with Intel® Atom® E3825 & Celeron® J1900**  
**UTC-510G with Intel® Celeron® N3350 & Pentium® N4200**



DeviceOn/iService

## Features

- Low Power & Fanless design
- Built-in Intel® Atom® E3825/Celeron® J1900 (UTC-510D)
- Built in Intel® Celeron® N3350/Pentium® N4200 (UTC-510G)
- Providing Natural Viewing Experience with 16:10 10.1" Display
- Landscape & Portrait screen mode support by different applications
- VESA 75 mm standard mounting holes for varied mounting demands
- Detachable plastic frame design for panel mount applications
- Support DeviceOn/iService software for remote device management



## Introduction

UTC-510 features an all-in-one computing system equipped with wide format, touch based LCD panel. It is easy to integrate key peripherals and display systems for diversified self-service and interactive signage deploy in different application areas. The systems deliver updated information with well-designed interactive interfaces, fully ensure relevant content and targeted promotions are delivered. UTC series touch panel computers are the best investments to enhance user satisfaction, further brand equity, and maximize business profits.

Moreover, Advantech DeviceOn/iService Software is a next-generation unified device management unified device management solution based on the WISE-DeviceOn platform. With support for batch operations and multi-device control, DeviceOn/iService enables easy device configuration and deployment for convenient remote device management.

## Specifications

	CPU	Intel® Atom® E3825 (UTC-510D)	Intel® Celeron® J1900 (UTC-510D)	Intel® Celeron® N3350 (UTC-510G)	Intel® Pentium® N4200 (UTC-510G)	
Processor System	Base Frequency	1.33 GHz (Dual-Core)	2 GHz (Quad-Core)	1.10 GHz (Dual-Core)	1.10 GHz (Quad-Core)	
	Cache	L2 Cache 1MB	L2 Cache 2MB	L2 Cache 2MB	L2 Cache 2MB	
	Memory	1 x 204 pin SO-DIMM DDR3L 1066 MHz up to 8 GB	1 x 204 pin SO-DIMM DDR3L 1333 MHz up to 8 GB	1 x 204 pin SO-DIMM DDR3L 1866 MHz up to 8 GB		
	HDD	1 x 2.5 internal SATA HDD bay				
	Network (LAN)	1 x Gigabit Ethernet ports (Supports Wake on LAN)				
	I/O ports	2 x RS-232 COM (COM1 RS-422/485 supported)* 1 x USB 2.0 / 1 x USB 3.0 / 2 x USB 2.0 (optional)*			2 x RS-232 COM (COM1 RS-422/485 supported)* 2 x USB 3.0 / 2 x USB 2.0 (optional)*	
		1 x Gigabit Ethernet (RJ-45) 1 x VGA Audio Line-out x 1, Mic-in x 1			1 x Gigabit Ethernet (RJ-45) 1 x VGA Audio Line-out x 1, Mic-in x 1	
	Stereo Speaker	2 W x 1				
	Bus expansion	1 Half size MiniPCIe 1 Half size mSATA			1 Full size MiniPCIe 1 Half size mSATA	
	Mounting	VESA 75 x 75 mm				
Dimensions (W x H x D)	265.40 x 182.40 x 39.55 mm					
Weight	1.80 kg (3.97 lbs)					
OS Support	WES7P 32/64bit Windows Pro Embedded 7 Pro 32/64bit WES8 32bit Windows Embedded 8.1 Industry Pro 64bit Win 10 IoT Enterprise 64bit Linux Ubuntu 16.04 Android 6.0			Window 10 IoT Enterprise Linux Ubuntu 20.04 Android 10		
Front Panel Protection	IP 65 Compliant					
Environmental Specifications	Operating Temperature	0 ~ 40° C (32 ~ 104° F)   0 ~ 35° C (32 ~ 95° F)		0 ~ 45° C (32 ~ 113° F)		
	Relative Humidity	10 ~ 95% @ 40° C non-condensing				
	Vibration	1Grms				
	Shock	5G peak acceleration (11 msec. duration)				
	Certification	CE (No RED certification), FCC, CB, UL, CCC, BSMI				
Power Supply	Input Rating	12 V/3 A (36W ITE Adapter)				
	Power consumption	Typical 10W Max. 20W				
LCD Display	Size/Type	10.1" TFT LCD with LED backlight				
	Max. Resolution	1280 x 800				
	Max. Color	16.7M				
	Pixel Pitch (um)	169.5 x 169.5				
	Brightness (cd/m²)	350				
	View Angle	170 / 170				
Camera	5 Mega Pixel (Optional)					
Touch Screen Option (PE/GE)	Type	Projected Capacitive, Glass Panel				
	Light Transmission	80% ± 5% / 90%				
	Controller	USB Interface / -				

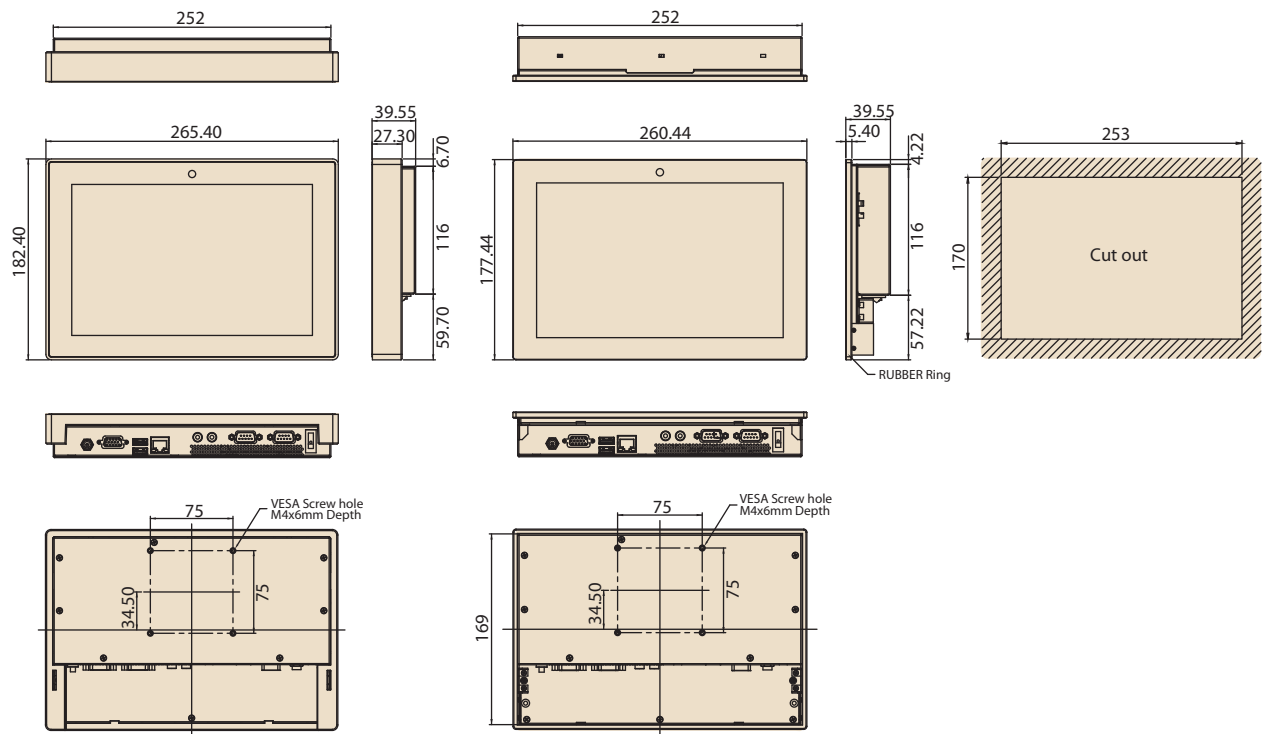
## Specifications (Cont.)

DeviceOn/iService Remote Device Management	Operating System	Windows 10
	Common Controls (Reboot, Shutdown)	✓
	Remote desktop	✓ (VNC)
	Audio Controls	✓*
	Connection Status	✓
	Hardware Status	✓*
	Hard Disk Status	✓*
	Batch Operation Support	✓
	OTA Storage Management	FTP
	OTA Software Updates	✓
	Software Watchlist	✓
	Software Start/Stop	✓*
*Dependant on device model	Peripherals Watchlist	✓*

Note: DeviceOn/iService software must be downloaded from the Advantech website at <https://www.advantech.com/search/?q=DeviceOn%2FiService&st=support&sst=Utility>

## Dimensions

Unit: mm



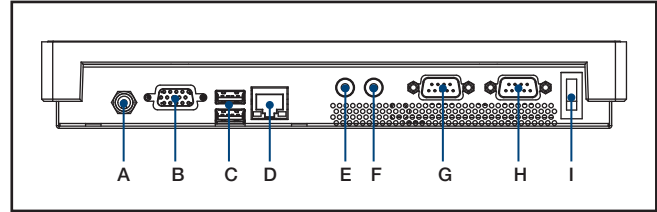
## Ordering Information

Part No.	Description
UTC-510DP-ATB0E	10.1" Intel Atom E3825 Based fanless UTC with PCT.T/S 4GB RAM
UTC-510DG-ATB0E	10.1" Intel Atom E3825 Based fanless UTC with Glass 4GB RAM
UTC-510DP-ATB1E	10.1" Intel Celeron J1900 Based fanless UTC with PCT.T/S 4GB RAM
UTC-510GP-ATB0E	10.1" Intel Celeron N3350 Based fanless UTC with PCT.T/S 4GB RAM
UTC-510GG-ATB0E	10.1" Intel Celeron N3350 Based fanless UTC with Glass 4GB RAM
UTC-510GP-ATB1E	10.1" Intel Pentium N4200 Based fanless UTC with PCT.T/S 4GB RAM
UTC-510GG-ATB1E	10.1" Intel Pentium N4200 Based fanless UTC with Glass 4GB RAM
UTC-510GP-ATN0E	10.1" Intel Celeron N3350 Based fanless UTC with PCT.T/S 4GB RAM, Ant
UTC-510GP-ATN1E	10.1" Intel Pentium N4200 Based fanless UTC with PCT.T/S 4GB RAM, Ant
1700001524	Power Cord 3P UL 10A 125V 180cm
170203180A	Power Cord 3P UK 2.5A/3A 250V 1.83M
170203183C	Power Cord 3P Europe (WS-010+WS-083)183cm
1700021374-01	Power Cord 3P CCC 2.5A 250V 250cm (IEC60320-C5)
1960073820N101	IO Cover UTC-510
1931031500	Screws for IO Cover UTC-510(*2)

### Peripherals for UTC-510 series

Part No.	Description
UTC-510P-F01E	Finger Print Reader For UTC-510 (USB connection)
UTC-510P-R01E	RFID Reader For UTC-510 (USB connection)
UTC-510P-B03E	2D Barcode Scanner - Honeywell N3680 for UTC-510 (USB connection)
UTC-510P-M01E	Magnet Strip Reader For UTC-510 (USB connection)
UTC-510P-S01E	Smart Card Reader For UTC-510 (USB connection)

## Fully- Integrated I/O



- A. DC Power jack
- B. VGA
- C. USB 3.0 X 1, USB 2.0 x 1 (for UTC-510D)  
USB 3.0 X 2 (for UTC-510G)
- D. LAN Ports
- E. MIC-in
- F. Line-out
- G. COM 2
- H. COM 1
- I. Power switch

### Installation Accessory

Part No.	Description
UTC-WALL-MOUNT1E	Wall Mount kit for UTC-520/515/510
UTC-WALL-MOUNT4E	UTC-510 VESA mount (75 x 75)
UTC-S03-STANDE	UTC 75*75 mm Desktop Stand
UTC-510-STAND0E	UTC-510 desktop stand
1960074091N000	UTC-510 Panel Mount Clamper (*4)
1930005598	UTC-510 Panel Mount Screw (*4)

### WIFI ordering information for UTC-510 series

Part No.	Description
UTC-510W-A0E	UTC-510 WIFI KIT, DNXA-116, 2Tx/2Rx, Antennas
UTC-510W-A1E	UTC-510 WIFI KIT, DNXA-92, 2Tx/2Rx, BT 4.0 Antennas
UTC-510W-A2E	UTC-510 WIFI KIT, DNXA-222, BT, 2Tx/2Rx, BT 4.2, Antennas

# DeviceOn/iService

## Unified Remote Device Management Software



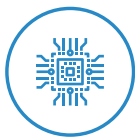
### Features

- Supports Advantech devices equipped with Windows, Android, and Linux OS
- Flexible device, location, user, and permissions management
- Enables remote monitoring and control of hardware, software, and peripherals
- Supports over-the-air (OTA) firmware and software updates
- Ensures quick, easy, and secure device onboarding
- RESTful APIs for third-party system integration

### Introduction

Advantech's DeviceOn/iService is a next-generation unified device management solution based on the WISE-DeviceOn platform. Designed to enable centralized monitoring and remote management, DeviceOn/iService supports Advantech devices equipped with Windows, Linux, or Android operating systems. The software also supports the management of applications and integrated peripherals, such as a barcode scanner, card reader, camera, and printer. Users can remotely access and control connected devices, take screenshots, rollout OTA upgrades, and use remote desktop capabilities for troubleshooting from any location at any time. Moreover, DeviceOn/iService supports batch operations to facilitate the management of multiple devices simultaneously for easy and convenient device configuration and deployment.

### Total Management



#### Devices & Hardware

- Windows, Linux, Android
- Hardware, storage, battery



#### Software & Peripherals

- Software monitoring & access
- Screens, USB devices, printers



#### Open for Expansion

- Peripheral integration
- Open APIs for integration

### Remote Access



#### Real-Time Monitoring

- Connection/hardware status
- Software/peripheral status
- Failure notifications



#### Remote Controls

- Power controls
- Audio, backlight controls
- Software controls



#### Troubleshooting

- Screenshots
- Remote desktop support

### Operational Efficiency



#### OTA updates

- System/software updates
- File repository management
- App store



#### Batch Controls

- 1-to-many batch reboot, etc.
- Time-saving tasks



#### Setup Booster

- Software/peripheral watchlist
- Roles, rule templates

Note: Some functions may vary according to the product

### System Architecture

