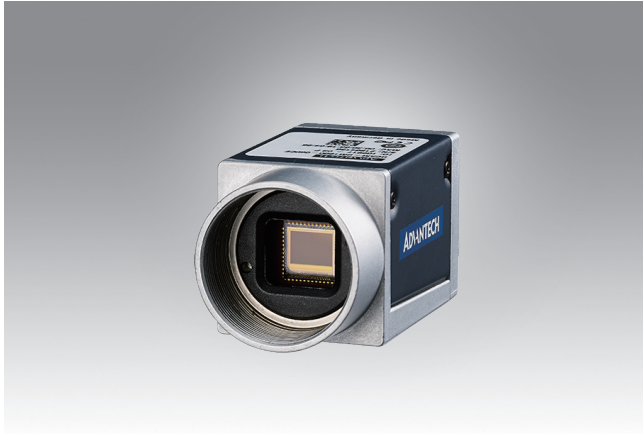


Quartz

0.3-20 Mega Pixel, GigE and USB 3.0 Industrial Camera



Features

- Best price/performance ratio CCD and CMOS sensor options
- Resolution up to 20 MP
- 100 m cable length and POE for GigE camera
- Ultra-small form factor
- Built in 56 MB frame buffer



Introduction

The Advantech Quartz industrial camera series have between 0.3 – 20 mega pixel CCD/CMOS and include ultra-fast speeds in a very small form factor. With the Quartz series, you can choose many of the most popular data interfaces in the machine vision market. The popular Gigabit Ethernet interface comes with a 100 meter cable length, and PoE (Power over Ethernet) to provide camera power and data via a single cable, and also offer separate input/output ports for triggering or flash control.

Ordering Information

GigE, POE

Part Number	Sensor	Resolution (H x V PIXELS)	Resolution (MP)	Frame Rate (FPS)	Pixel Size (µm x µm)	Sensor Size (mm x mm)	Optical Size	Interface	Shutter	Mono/Color	CCD/CMOS
QCAM-GM0640-090CE	ICX424	659 x 494	0.3	90	7.4 x 7.4	4.88 x 3.66	1/3"	GigE, POE	Global	Mono	CCD
QCAM-GM0640-121CE	ICX618	659 x 494	0.3	134	5.6 x 5.6	3.69 x 2.77	1/4"	GigE, POE	Global	Mono	CMOS
QCAM-GM0640-300CE	PYTHON 300	640 x 480	0.3	376	4.8 x 4.8	3.07 x 2.30	1/4"	GigE, POE	Global	Mono	CMOS
QCAM-GC0640-300CE	PYTHON 300	640 x 480	0.3	340	4.8 x 4.8	3.07 x 2.30	1/4"	GigE, POE	Global	Color	CMOS
QCAM-GM0720-290CE	IMX287	720 x 540	0.3	291	6.9 x 6.9	4.97 x 3.73	1/2.9"	GigE, POE	Global	Mono	CMOS
QCAM-GM1300-030CE	ICX445	1296 x 966	1.3	30	3.75 x 3.75	4.86 x 3.62	1/3"	GigE, POE	Global	Mono	CCD
QCAM-GM1300-060DE	EV76C560	1282 x 1026	1.3	60	5.3 x 5.3	6.80 x 5.40	1/1.8"	GigE, POE	Global	Mono	CMOS
QCAM-GC1300-060CE	EV76C560	1280 x 1024	1.3	60	5.3 x 5.3	6.80 x 5.40	1/1.8"	GigE, POE	Global	Color	CMOS
QCAM-GM1440-073CE	IMX273	1440 x 1080	1.6	73	3.45 x 3.45	4.97 x 3.73	1/2.9"	GigE, POE	Global	Mono	CMOS
QCAM-GC1440-073CE	IMX273	1440 x 1080	1.6	73	3.45 x 3.45	4.97 x 3.73	1/2.9"	GigE, POE	Global	Color	CMOS
QCAM-GM1600-060DE	EV76C570	1282 x 1026	2	60	4.5 x 4.5	7.20 x 5.40	1/1.8"	GigE, POE	Global	Mono	CMOS
QCAM-GM1920-051CE	IMX392	1920 x 1200	2.3	51	3.45 x 3.45	6.6 x 4.1	1/2.3"	GigE, POE	Global	Mono	CMOS
QCAM-GM2000-035CE	IMX265	2048 x 1536	3	36	3.45 x 3.45	7.07 x 5.30	1/1.8"	GigE, POE	Global	Mono	CMOS
QCAM-GM2440-020CE	IMX264	2448 x 2048	5	23	3.45 x 3.45	8.45 x 7.07	2/3"	GigE, POE	Global	Mono	CMOS
QCAM-GC2440-020CE	IMX264	2448 x 2048	5	23	3.45 x 3.45	8.45 x 7.07	2/3"	GigE, POE	Global	Color	CMOS
QCAM-GM2500-014DE	MT9P031	2592 x 1944	5	14	2.2 x 2.2	5.70 x 4.28	1/2.5"	GigE, POE	Rolling	Mono	CMOS
QCAM-GC2500-014CE	MT9P031	2590 x 1942	5	14	2.2 x 2.2	5.70 x 4.28	1/2.5"	GigE, POE	Rolling	Color	CMOS
QCAM-GM2500-020CE	PYTHON 5000	2592 x 2048	5	21	4.8 x 4.8	12.44 x 9.83	1"	GigE, POE	Global	Mono	CMOS
QCAM-GC2500-020CE	PYTHON 5000	2592 x 2048	5	21	4.8 x 4.8	12.44 x 9.83	1"	GigE, POE	Global	Color	CMOS
QCAM-GM3000-016CE	IMX178	3088 x 2064	6	16	2.4 x 2.4	7.41 x 4.95	1/1.8"	GigE, POE	Rolling	Mono	CMOS
QCAM-GC3000-016CE	IMX178	3088 x 2064	6	16	2.4 x 2.4	7.41 x 4.95	1/1.8"	GigE, POE	Rolling	Color	CMOS
QCAM-GM4000-008CE	MX226	4024 x 3036	12	8	1.85 x 1.85	7.44 x 5.62	1/1.7"	GigE, POE	Rolling	Mono	CMOS
QCAM-GC4600-007CE	MT9F002	4608 x 3288	14	7	1.4 x 1.4	6.45 x 4.63	1/2.3"	GigE, POE	Rolling	Color	CMOS
QCAM-GM5400-005CE	IMX183	5472 x 3648	20	5	2.4 x 2.4	13.13 x 8.76	1"	GigE, POE	Rolling	Mono	CMOS

USB 3.0

Part Number	Sensor	Resolution (H x V PIXELS)	Resolution (MP)	Frame Rate (FPS)	Pixel Size (µm x µm)	Sensor Size (mm x mm)	Optical Size	Interface	Shutter	Mono/Color	CCD/CMOS
QCAM-UM0640-750CE	PYTHON 300	640 x 480	0.3	751	4.8 x 4.8	3.07 x 2.30	1/4"	USB 3.0	Global	Mono	CMOS
QCAM-UC0640-750CE	PYTHON 300	640 x 480	0.3	751	4.8 x 4.8	3.07*2.30	1/4"	USB 3.0	Global	Color	CMOS
QCAM-UM1300-200CE	PYTHON 1300	1280 x 1024	1.3	203	4.8 x 4.8	6.14 x 4.92	1/2"	USB 3.0	Global	Mono	CMOS
QCAM-UC1300-200CE	PYTHON 1300	1280 x 1024	1.3	203	4.8 x 4.8	6.14 x 4.92	1/2"	USB 3.0	Global	Color	CMOS
QCAM-UM1440-220CE	IMX273	1440 x 1080	1.6	227	3.45 x 3.45	4.97 x 3.73	1/2.9"	USB 3.0	Global	Mono	CMOS
QCAM-UC1440-220CE	IMX273	1440 x 1080	1.6	227	3.45 x 3.45	4.97 x 3.73	1/2.9"	USB 3.0	Global	Color	CMOS
QCAM-UM1920-155CE	IMX174	1920 x 1200	2.3	164	5.86 x 5.86	11.25 x 7.03	1/1.2"	USB 3.0	Global	Mono	CMOS
QCAM-UC1920-155CE	IMX174	1920 x 1200	2.3	164	5.86 x 5.86	11.25 x 7.03	1/1.2"	USB 3.0	Global	Color	CMOS
QCAM-UM2440-035CE	IMX264	2448 x 2048	5	35	3.45 x 3.45	8.45 x 7.07	2/3"	USB 3.0	Global	Mono	CMOS
QCAM-UC2440-035CE	IMX264	2448 x 2048	5	35	3.45 x 3.45	8.45 x 7.07	2/3"	USB 3.0	Global	Color	CMOS
QCAM-UM2590-060CE	IMX334ROI	2592 x 1944	5	60	2.0 x 2.0	5.2 x 3.9	1/2.8"	USB 3.0	Rolling	Mono	CMOS
QCAM-UC2590-060CE	IMX334ROI	2592 x 1944	5	60	2.0 x 2.0	5.2 x 3.9	1/2.8"	USB 3.0	Rolling	Color	CMOS
QCAM-UM4024-029CE	MX226	4024 x 3036	12	31	1.85 x 1.85	7.44 x 5.62	1/1.7"	USB 3.0	Rolling	Mono	CMOS