

Ei-S110

Multiple-use Clinical & Signage Gateway



Features

- Built-in Arm® Cortex®-A17 quad-core processor (1.6 GHz)
- 2 GB onboard memory
- 16GB eMMC onboard expandable MicroSD (TF) storage
- Dual HDMI outputs (1 x supports 4K resolution and 1 x supports 1080P resolution)
- Ultra-compact design for easy installation in confined spaces
- Supports various mount options including VESA, wall, pole, Magnet, and DIN-rail mounting
- Can be integrated with optional Wi-Fi, Bluetooth, and 4G LTE modules
- Equipped with WISE-PaaS/SignageCMS software, which supports multi-screen displays
- Supports Android 6.0



Introduction

To fulfill customer requirements in edge computing trend, Advantech offers Ei-A110 Edge Intelligence System integrated hardware plus software solution powered by WISE-DeviceOn. It allows users to incorporate sensor data aggregation, edge analytics, and cloud integration for fast and easy real-time edge intelligence, and plus the flexibility to add on more software modules from the WISE-PaaS marketplace that enable IoT connectivity, data manageability and analytics in the edge.

WISE-DeviceOn Function Highlights



Device Management

- Remote Monitoring & Control
- Device Onboarding & Registration



Connectivity Service

- Industrial Protocol Connectivity
- Plug-n-Play Peripherals



System Security

- McAfee Application Control
- Acronis Backup Recovery



Edge Intelligence

- Real-Time Data Processing
- Data Analysis & Filtering



Cloud Integration

- Pre-Configured with Azure, Ali, AWS
- Data Intelligence & AI Enabling



WISE-Marketplace Integration

- Over 200+ I.App Offerings
- Easy to Purchase and Deploy

Product Highlights



2 x HDMI with locks

- Supports native 4K content @60fps
- Dual 1080P resolution outputs



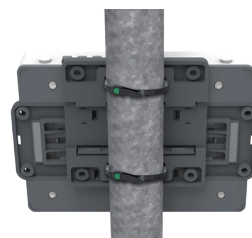
VESA Mount (75 x 75 mm)



Wall Mount (using the two side wings)



Magnet Mount (attached using magnets on the two wings)



Pole Mount (attached using cable ties)



DIN-Rail Mount

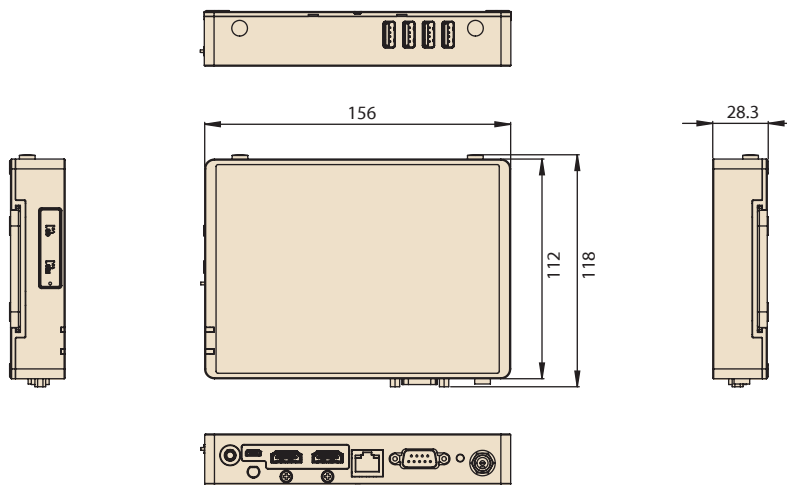
Specifications

		Ei-S110
System	CPU	Arm® Cortex®-A17 quad-core processor (1.6 GHz)
	GPU	Mali-T764
Graphics	Graphics Engine	OpenGL ES 1.1/2.0/3.0, OpenCL 1.1, DirectX 11
	Capacity	2 GB onboard DDR3L (1333 MHz)
Memory	Flash	16 GB of onboard eMMC
	Extension	Micro SD
Multimedia	H/W Video Codec	Decoder: 4K 10-bits 60fps H.265, H.264, MPEG-1, MPEG-2, MPEG-4,VC-1, VP8, AVS, MVC Encoder:1080P for H.264 (BP@level4.0, MP, HP@level4.0), MVC and VP8
	Display Resolution	HDMI1: Native 4K resolution up to 3840 x 2160 (default 1080p) HDMI2: 1920 x 1080
I/O	HDMI	2
	LAN	1 x 10/100/1000 Mbps
	Serial Port	1 (RS232/485/422 by jumper)
	USB 2.0	4
	OTG USB	1
	Audio	1
	Reset	1
	LED Indicators	1 x Power, 1 x Wireless
Expansion	DC In	1
	Micro SD Card Slot	1
	M.2	1 (for Wi-Fi module option)
Mechanical	Mini PCIe	1 (for 4G module option)
	Dimensions (L x W x H)	156 x 112 x 28 mm (6.14 x 4.41 x 1.10 in)
Installation	Weight	0.43 kg (0.94 lb)
	Power	12V/3A
Software	Mount Options	VESA (75 x 75), wall, desktop, pole, magnet,DIN rail
	Operating System	Android 6.0
	Software	WISE-Paas/SignageCMS
	Display Orientation	Portrait and landscape modes supported
	Client Status Reports	Generates Heartbeat, System reports
Environment	Supported Media Formats	Image: JPG, PNG, BMP, GIF; Video: H.264, MPEG-4, MPEG-2; Text: text, scrolling text; Audio: MP3, AAC, PCM
	Operating Temperature	0 ~ 40° C (32 ~ 104° F)
	Storage Temperature	-40 ~ 85° C (-40 ~ 185° F)
Certification	Relative Humidity	90% @ 40° C (non-condensing)
		CCC/BSMI/CE/FCC/UL/CB

Dimensions

Ei-S110

Unit: mm



Ordering Information

P/N	Description	RAM	Storage	OS	SW
Ei-S110	ARM Cortex-A17 quad-core CPU (1.6 GHz) with 2 x HDMI, 4 x USB 2.0, 1 x COM, and 1 x OTG USB	2GB	16GB	Android 6.0	WISE-PaaS/SignageCMS (Client)

Optional Accessories

Product	Part Number	Usage	Description
4G Module	968AD00081	1	Quectel EC20CEFA Mini-PCIe 4G module
	1750006264	1	Antenna cable SMA(F)/MHF 15 cm
	1750007990-01	1	Antenna 4G/LTE full band L=11 cm 50 Ohm
Wifi/BT4.0 Module	EWM-W167M201E	1	IEEE-802.11b/g/n (1x1)+BT4.0 RTL8723BS SDIO modu
	1750008800-01	1	Antenna Cable R/P SMA (M) to MHF4, 100mm
	1750008671-01	1	Dipole Ant.SMA/M-R 2.4/5G 2.5/4dBi BLK 109 mm

Product	Part Number	Usage	Description
HDMI Cable	1700023855-01	1 or 2	M cable HDMI 19P(M)/HDMI 19P(M) 1M with dual locks
	96CB-POWER-B-1.8M	1	RVV 300/500V 3G 0.75 CT-12 (China)
Power Cord	17NSEC0N230332	1	H05VV-F 3G 0.75 CT-12 1.83M(Europe)
	17NSEC0N230338	1	VCTF 3G 0.75 CT-12 PSE JPN 1.83M(Japan)
	17NSEC0N230331	1	SVT 18/3 105 °C CT-12 1.83M(USA)
	170203180A-01	1	H05VV-F (RVV 300/500V) 3G 0.75 CT-12 1.83M(UK)
	1700021375-01	1	Power Cord BSMI 3P 2.5A 125V 250cm (IEC60320-C5) (TW)

I/O Interface

Ei-S110

