

# AMiS-72 TeleHealth Cart



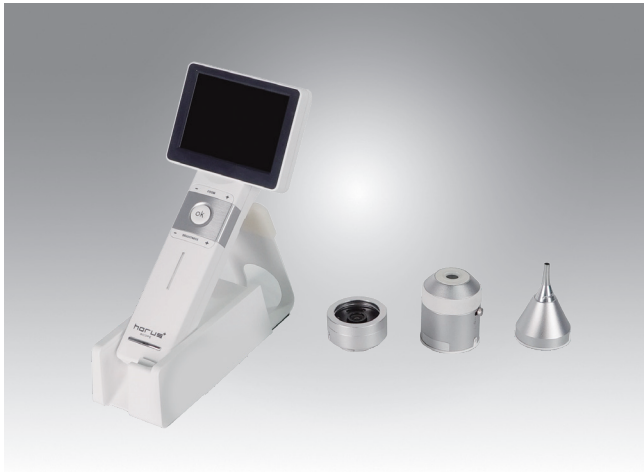
## Features

- Highly integrated communication platform and power cart solution for telehealth applications
- PTZ Camera with 18X Total Zoom and Full HD 1080p 60fps Resolution
- All-In-One Touch Computer with Intel Core i CPU for high performance
- Easy-to-use hand-held digital scope with video system used for capturing images of the body and sharing images through the communication platform
- 30kg load capacity with motorized height adjustment
- IPX1 rated for superior infection control

## Specifications

Base Cart	Footprint	19.7" x 18.5" (500 x 470 mm)
	Casters	125mmx125mm (Anti-Static Medical casters, two locking, two non-locking)
	Height Adjustment Range	34"-45.8"(864-1164mm) Stroke 300mm
	Display Holder	Standard VESA Mount (VESA 75/75; VESA 100/100); Weight capacity: max. 10Kg
	Dashboard	Battery power button Computer power button LED for battery capacity indication
	Work surface	18.5" x 19.3" (469.9 x 489.9 mm) Extra Loading Capacity: Up to 66lb/30kg
	Keyboard & Mouse Area	Keyboard size: Up to 380 x 140 x 25mm Keyboard LED light Mouse tray
Accessory Integration Interface	Neck: Dove Tail Work Surface: Din Rail (Right, Left and Rear)	
Control AIO PC (POC-W213L)	CPU	Intel Core i5-7300U 2.6GHz
	memory	4GB
	OS	Win 10 IoT
	HDD	128GB SSD
	Screen	21.5" 1920 x 1080 FHD P-Cap Touch Screen
	WiFi	Intel® Dual Band Wireless-AC 8265
	IP Rating	Front Panel: IP65 Entire Computer: IPX1
Aver PTZ Cam520	Resolution	Full HD 1080p 60fps Resolution
	Zoom	18X Total Zoom
	Interface	USB
Jabra UC 510	Meeting with	Meeting with up to 4 people
	DSP	Digital Signal Processing (DSP) Technology
Battery Manager Software	AMiS_Link	Battery capacity indicator Alerts (battery capacity, temperature, warning) Battery Life cycle statistics Report & log file Client Installation Server Installation (Optional) Multi-language support, including Chinese Traditional, Chinese Simple, English, German and Dutch
Power Module	Battery type	Lithium-ion
	Battery capacity	420Wh
	Power Input Voltage	100-240 V <sub>AC</sub> , 50-60Hz, Max 4.5A
	DC Output Voltage	System 1: 19 V <sub>DC</sub> , Max. 6 A System 2: 12 V <sub>DC</sub> , Max. 5 A
	Battery Life SPAN	Capacity 80%, 2000cycles or 2 years (Depends on which term come first)
	Battery Runtime (Depends on system configuration)	8-10 hours
Certificate		CE, FCC, IEC60601-1 Compliance

# Digital Handheld Diagnostic Set



## Features

- 5Mp HD camera sensor
- HDMI and USB live video connections with lockable cables
- Manual focus with live image zoom
- Integrated lens locking system
- Touch Screen operation
- Backwards compatibility - works with all existing lenses
- Additional lens options

## Specifications

Items	DSC 300P			
CPU	DM388			
Sensor	AR0521			
Focus type	Focus wheel			
LCD Monitor	3.5" Projective capacitive touch panel			
File storage	Micro SD Card (2~32G)			
Interface	Wi-Fi	Embedded		
	Bluetooth	Embedded		
	Micro HDMI	○		
	Mini USB	○		
	Magnetic pogo pin charger	○		
	AV out	-		
Function	Manual Focus	○		
	Auto Focus	-		
	Auto Exposure	○		
	Auto White Balance	○		
Lens	Dermatoscope (DDC100)	Dimension	80 x 90 x 205 mm	
		Weight	370g	
		Field of view	10mm	
		Camera/video flash light	Natural white LED	
	Otoscope (DOC 300S)	Polarization	Yes	
		Dimension	43 x 43 x 70 mm	
		Weight	69g	
		Field of view	7~20mm	
	General scope (DGC100)	Camera/video flash light	Natural white LED	
Dimension		5 x 9 x 20.5 cm		
Weight		300g		
Field of view		88 m		
Camera/video flash light		Natural white LED		
Picture Resolution	2560 x 1920 (5M pixels)			
Video Resolution	2560 x 1920 pixels			