

# AMAX-5015

# AMAX-5018

# AMAX-5024

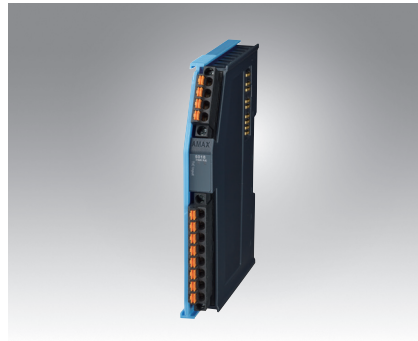
## 4-ch RTD Input Module

## 6-ch Thermocouple Input Module

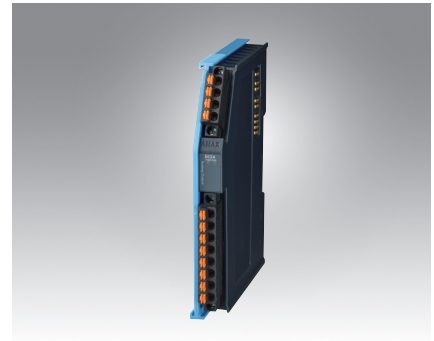
## 4-ch Analog Output Module



AMAX-5015



AMAX-5018



AMAX-5024



### Specifications

#### General

- **Certification** CE, FCC class A
- **Connector** Pluggable 4P+8P push-in terminal (#24~16 AWG)
- **Enclosure** PC
- **Power Consumption** 2W@24V<sub>DC</sub>
- **Protocol** EtherCAT
- **Transmission Rate** 100Mbps
- **LED Indicator** PWR, RUN

#### RTD Input

- **Channels** 4
- **Input Connections** 2 or 3 wire
- **Temperature Range Pt 100 RTD:**
  - Pt -50°C to 150°C
  - Pt 0°C to 100°C
  - Pt 0°C to 200°C
  - Pt 0°C to 400°C
  - Pt -200°C to 200°C
  - IEC RTD 100 ohms (a = 0.00385)
  - JIS RTD 100 ohms (a = 0.00392)
- **Pt 1000 RTD** Pt -40°C to 160°C
- **Balco 500 RTD** -30°C to 120°C
- **Ni 518 RTD** -80°C to 100°C
- **Resolution** 0°C to 100°C  
16 bit with ±0.1% FSR accuracy
- **Sample Rate** 100 sample/s (per channel)
- **Burn-out detection** Yes
- **Protection**
- **Isolation Voltage** 2,000 V<sub>DC</sub>
- **Environment**
- **Operation Temperature** -25~60°C (vertical mounted)
- **Storage Temperature** -40~85°C
- **Relative Humidity** 95% (non-condense)

### Ordering Information

- **AMAX-5015** 4-ch RTD Input Module

### Specifications

#### General

- **Certification** CE, FCC class A
- **Connector** Pluggable 4P+8P push-in terminal (#24~16 AWG)
- **Enclosure** PC
- **Power Consumption** 2W@24V<sub>DC</sub>
- **Protocol** EtherCAT
- **Transmission Rate** 100Mbps
- **LED Indicator** PWR, RUN

#### Thermocouple Input

- **Channels** 6 differential
- **Input Type** V, mV, Thermocouple
- **Input Impedance** >2MΩ
- **Voltage Range** ±50 mV, ±100 mV, ±500 mV, ±1 V, ±2.5 V
- **Temperature Range**
  - Type J (0 ~ 760°C)
  - Type K (0 ~ 1370°C)
  - Type T (-100 ~ 400°C)
  - Type E (0 ~ 1000°C)
  - Type R (500 ~ 1750°C)
  - Type S (500 ~ 1750°C)
  - Type B (500 ~ 1800°C)
  - Type N (-200 ~ 1300°C)
- **Resolution** 16-bit with ±0.1% FSR accuracy
- **Sample Rate** 100 sample/s (per channel)
- **Protection**
- **Isolation Voltage** 2,000 V<sub>DC</sub>
- **Environment**
- **Operation Temperature** -25~60°C (vertical mounted)
- **Storage Temperature** -40~85°C
- **Relative Humidity** 95% (non-condense)

### Ordering Information

- **AMAX-5018** 6-ch Thermocouple Input Module

### Specifications

#### General

- **Certification** CE, FCC class A
- **Connector** Pluggable 4P+8P push-in terminal (#24~16 AWG)
- **Enclosure** PC
- **Power Consumption** 3.5W@24V<sub>DC</sub>
- **Protocol** EtherCAT
- **Transmission Rate** 100Mbps
- **Distributed Clock** Default inactive
- **LED Indicator** PWR, RUN

#### Analog Output

- **Channels** 4
- **Output Type** V, mV, mA
- **Output Range** 0~5V, 0~10V, ±5V, ±10V, 4~20mA, 0~20mA
- **Resolution** 16-bit with accuracy ±0.01% FSR@25°C
- **Slew Rate** Configurable
- **Drift** ± 50 ppm/°C
- **Current Load Resistor** Max. 500 Ω
- **Voltage Load Resistor** Min. 1KΩ

#### Protection

- **Isolation Voltage** 2,000 V<sub>DC</sub>

#### Environment

- **Operation Temperature** -25~60°C (vertical mounted)
- **Storage Temperature** -40~85°C
- **Relative Humidity** 95% (non-condense)

### Ordering Information

- **AMAX-5024** 4-ch Analog Output Module